

INNOVATIONS®

THANK YOU for your purchase of Innovations! Below are our hanging instructions, intended to help you accomplish a beautiful installation. Before proceeding with your installation, check your material and packing slip to ensure you've received your order in entirety. Also check for signs of defects prior to installation of material. If at any time you have questions regarding your installation, please call our offices at 800.227.8053.

Please note that Innovations is unable to entertain product claims after three (3) panels have been hung or if material is cut and glued in excess of three (3) drops.

Pattern: Vandal

Recommended Primer: Pigmented Acrylic Wallcovering Specific Primer

Recommended Adhesive: Non-strippable, heavy duty, clay wallcovering adhesive

Recommended Wall Surface: Level 4 sheetrock finish or similar

Seams/Paneling Visibility: Seamless with no Paneling

Hanging Directionality: Straight Hang

Pattern Matching: Side-Match or Non-Match (see below)

Trimming/Hanging Method: Table trim; butted on the wall.

Recommended Smoother/Roller: Plastic Smoother and Rubber Seam Roller

Wrapping Corners: You can wrap corners with this material, however excessive wear may occur on the corner. Please be sure to wrap your corners by at least 6". Do not pull material too taught or it may pull away from the wall.

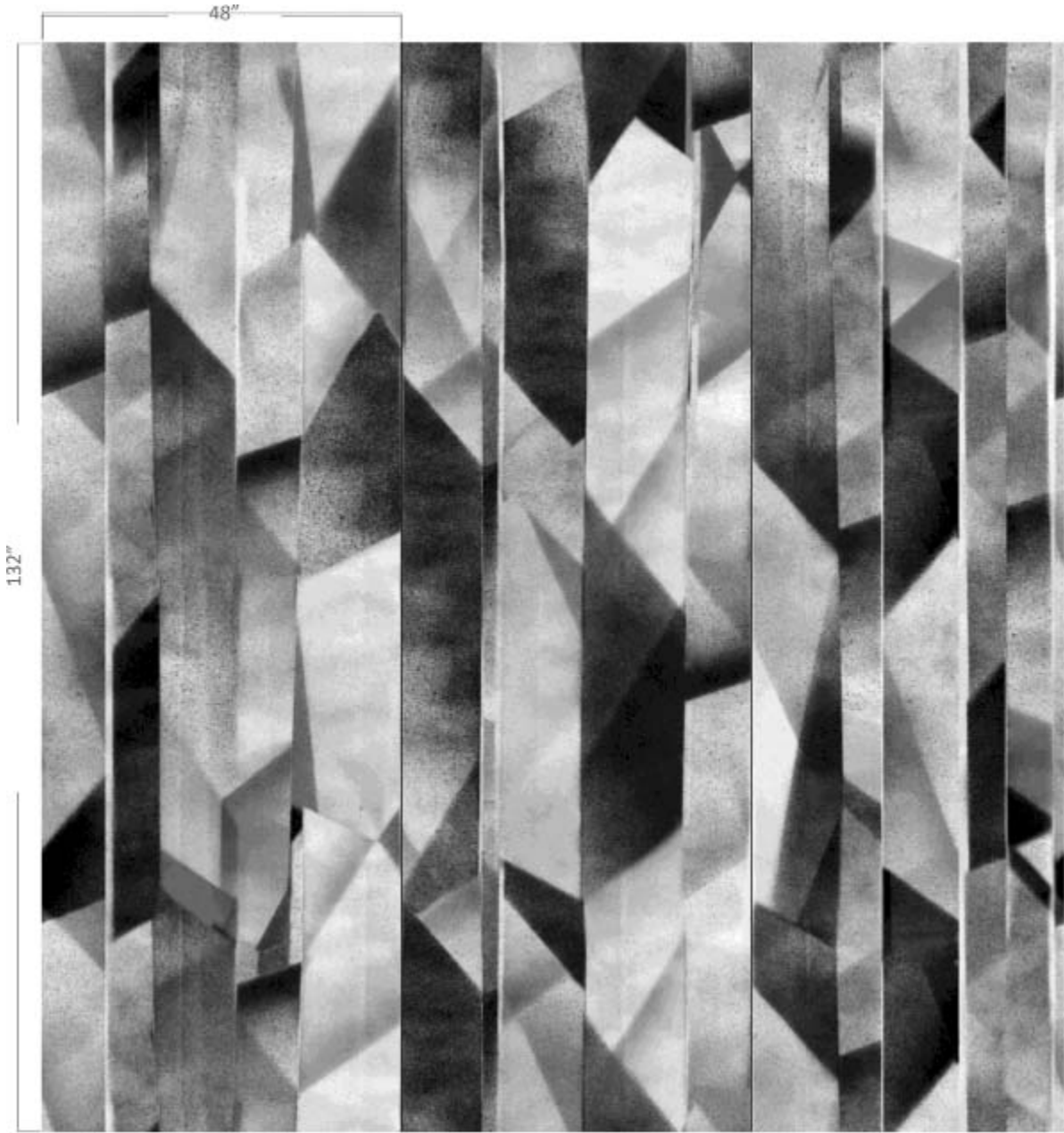
1. Begin installation by inspecting the material you have received. Ensure all material is visually defect free and matches packing slip.
2. Using correct wallcovering primer, apply primer to destination wall and allow primer to dry.
 - a. Always make sure your installation location is properly climate controlled.
3. Apply paste to backing of material using an adhesive roller. Avoid oversoaking and ensure even application. DO NOT USE a pasting machine as it will add too much water content to paste.
4. Once material has properly been booked to insure proper level of tack, apply material to the primed wall.
 - a. Hang material in sequence as it comes off the roll, including short drops around windows, doors, and other obstructions on your wall.
5. DO NOT get adhesive on the face of material. Adhesive is very difficult to clean and next to impossible to remove after it is dry without potentially damaging the wallcovering face. Dried adhesive also tends to leave a hazy appearance.
 - a. To avoid getting adhesive on the face of material, we recommend using a low-adhesive safe-release painter's tape on the seams to keep the product face clean.
6. When trimming this product, we advise you to use a new razor blade with each cut. A dull razor blade is the primary cause of fraying and unsightly seams. DO NOT USE a seam buster.

Pattern Notes

- Vandal has a selvedge edge that must be trimmed prior to installation, bringing the useable width of this material to 48".
- This product is a mural that extends three full drops. Each drop has a different horizontal pattern of 48" and vertical pattern of 132". While a mural, you can randomly match each panel. Or, if you prefer to match them as designed, you can follow the diagrams below.

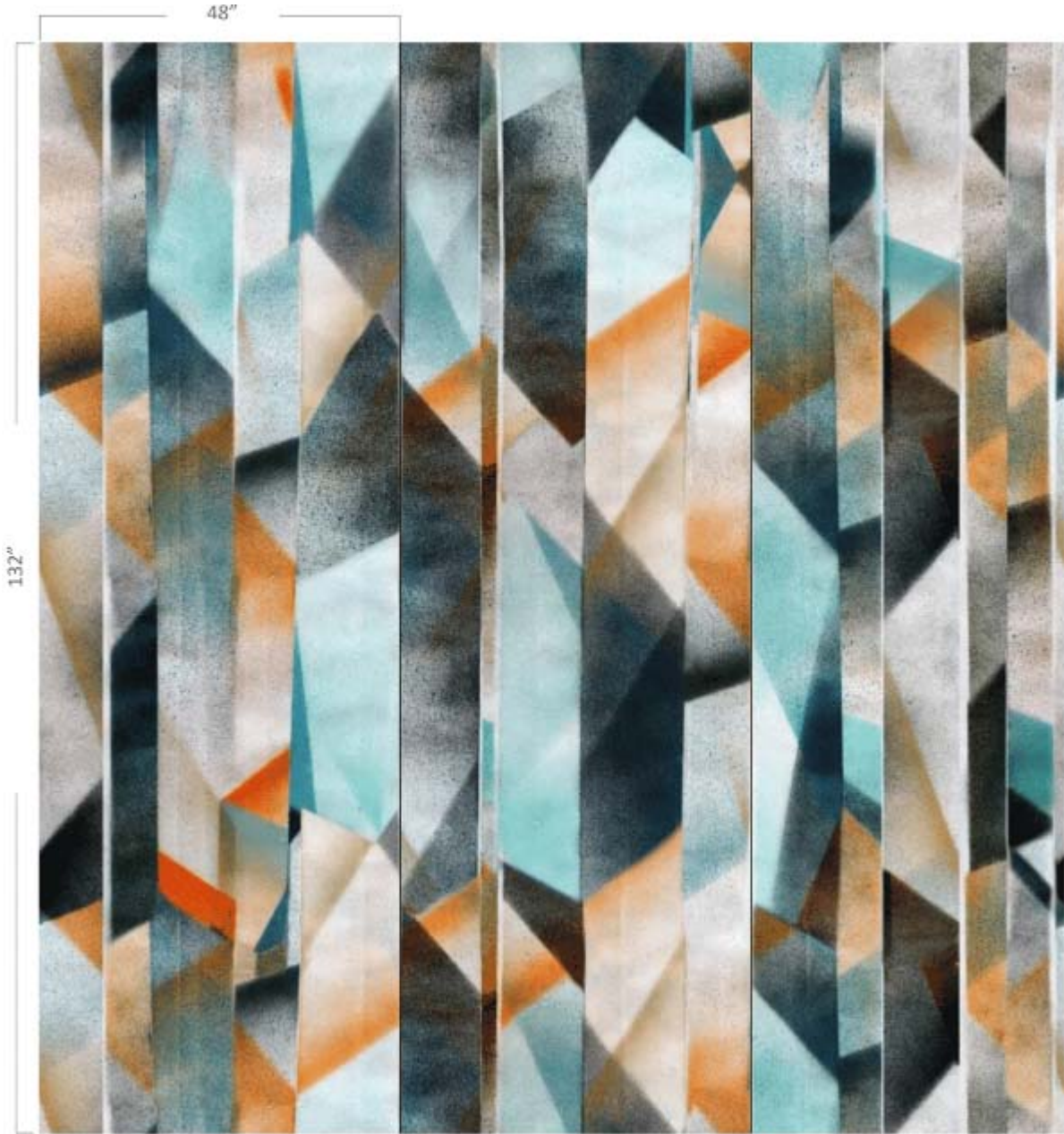
INNOVATIONS®

Pattern Repeat Diagram:



INNOVATIONS®

Pattern Repeat Diagram (in color):



INNOVATIONS®

Pattern Repeat Diagram (in color):

